

Major Scales, Bass Clef

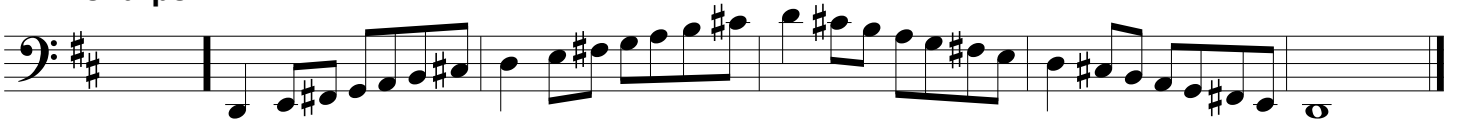
C none



G 1 sharp



D 2 sharps



A 3 sharps



E 4 sharps



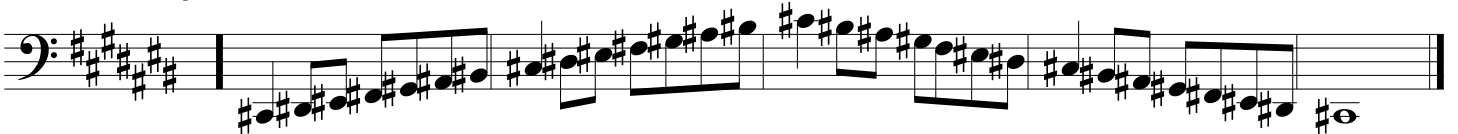
B 5 sharps



F# 6 sharps



C# 7 sharps



F 1 flat

Musical notation for the F major scale (1 flat) in bass clef. The scale starts on F4 and ends on F5. The notes are: F, G, A, Bb, C, D, E, F.

Bb 2 flats

Musical notation for the Bb major scale (2 flats) in bass clef. The scale starts on Bb4 and ends on Bb5. The notes are: Bb, C, D, Eb, F, G, Ab, Bb.

Eb 3 flats

Musical notation for the Eb major scale (3 flats) in bass clef. The scale starts on Eb4 and ends on Eb5. The notes are: Eb, F, G, Ab, Bb, C, Db, Eb.

Ab 4 flats

Musical notation for the Ab major scale (4 flats) in bass clef. The scale starts on Ab4 and ends on Ab5. The notes are: Ab, Bb, C, Db, Eb, F, Gb, Ab.

Db 5 flats

Musical notation for the Db major scale (5 flats) in bass clef. The scale starts on Db4 and ends on Db5. The notes are: Db, Eb, F, Gb, Ab, Bb, Cb, Db.

Gb 6 flats

Musical notation for the Gb major scale (6 flats) in bass clef. The scale starts on Gb4 and ends on Gb5. The notes are: Gb, Ab, Bb, Cb, Db, Eb, Fb, Gb.

Cb 7 flats

Musical notation for the Cb major scale (7 flats) in bass clef. The scale starts on Cb4 and ends on Cb5. The notes are: Cb, Db, Eb, Fb, Gb, Ab, Bb, Cb.

Chromatic

Two lines of musical notation for a chromatic scale in bass clef. The first line starts on C4 and ascends chromatically to C5. The second line starts on C5 and descends chromatically to C4. The notes are: C, C#, C, C#, C, C#, C, C#, C, C#, C, C#, C, C#, C, C#.